

WARRANTY  
**3**  
YEAR

**elektrolab**  
POWER SOLUTION  
[www.ups-napajanja.rs](http://www.ups-napajanja.rs)

## Smart Sinus CATV Ups

- Pure Sine wave output
- Real time clock
- Adjustable battery charger
- Output voltage tolerance +/-5%
- Wide input voltage operation range
- Start without battery
- Docus and LAN supported
- Printed circuit boards are protected from moisture
- Carefully selected high quality components from well-known manufacturers
- Robust design for extreme conditions
- Long-life without reparation

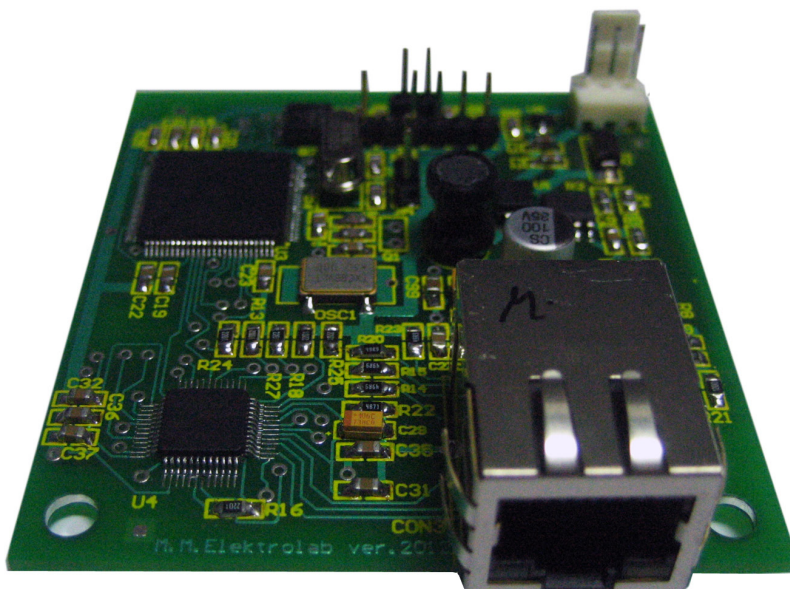
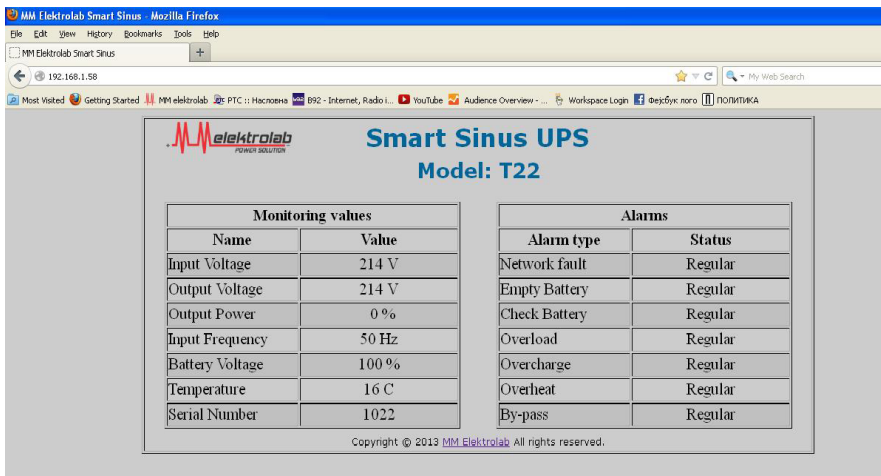


[www.ups-napajanja.rs](http://www.ups-napajanja.rs)

CE

**DESCRIPTION::**

- CATV ups is ideal for Cable operators or for other applications
- Work in the extreme environmental conditions: dust, humidity, temperature -40C to + 60C
- High quality product components from well-known manufacturers
- Sine wave at the output: 220V~ /70V~ / ~63V~ / 48V~
- Wide input range of voltage operation (min 150V~ to max 290V~)
- Lots of quality protections.
- Saving event+log alarms in real time.
- LAN communication
- Alpha-numeric display with backlight,showing all parameters,status ups, event+log alarms, parameter settings.
- Start Without Batteries, ideal option when the batteries are bad.
- Super charger, digital adjustable charger, min 26Ah to max 100Ah with IU characteristics and temperature compensation.
- Long life -UPS life without repairs over 10 years (not applicable for batteries).
- An option of installing a LAN card with SNMP and HTTP protocols, which allows real-time monitoring of UPS devices anywhere in the country and abroad.



**TECHNICAL DATA:**

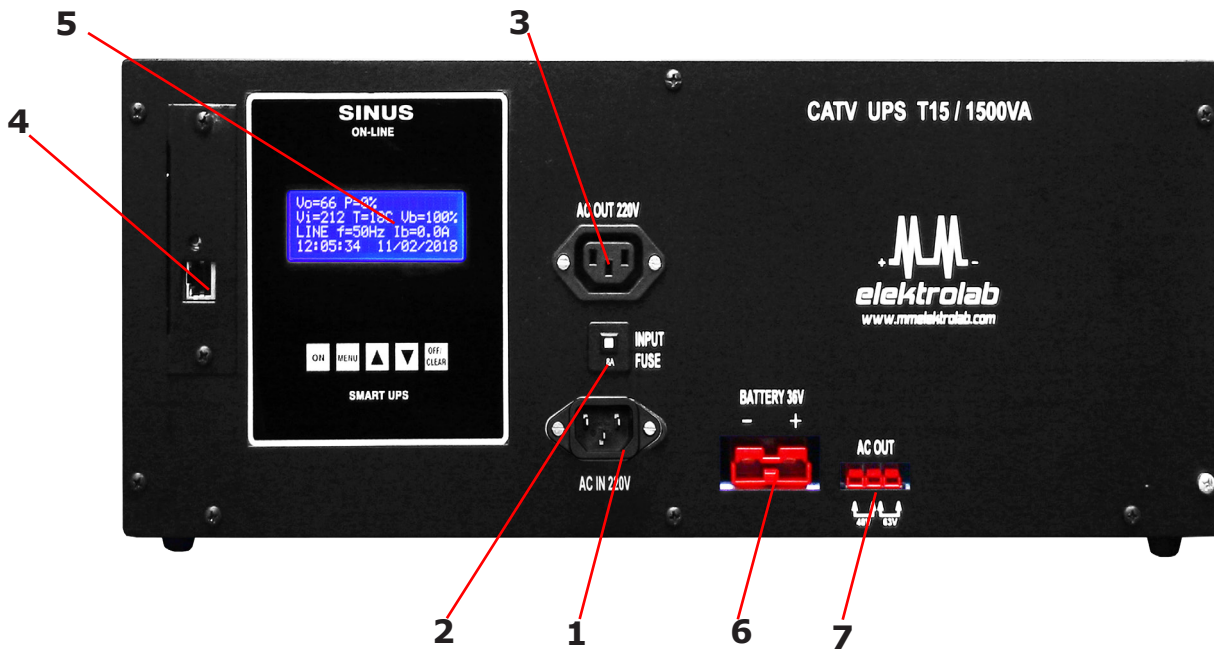
<b>MODEL:</b>	<b>C3</b>	<b>C7</b>	<b>C12</b>	<b>C15</b>
Power:	valid for all outputs			
	300 VA 300 W	700 VA 500 W	1000 VA 700 W	1500 VA 1000 W
<b>INPUT:</b>				
Nominal Voltage:	230v~ (min 150Vac ~ max 290Vac)			
Frequency:	50Hz +/- 10 %			
<b>IZLAZ:</b>				
Nominal Voltage out 1:	63 ili 48V +/- 5%			
Current out 1:	Max 5 A	Max 8 A	Max11 A	Max 15 A
Nominal Voltage out 2:	230V +/- 5 %			
Wave form:	Pure Sine wave			
Frequency:	50Hz +/- 0,01%			
Transfer time:	2 msec			
Efficiency on main operation:	87%			
<b>PROTECTIONS:</b>				
Protections:	Excessive battery discharge; Overcurrent: short circuit output; Battery overcharged; Reverse battery polarity; Overvoltage output; Under voltage output; Internal thermo protection; Overload main: 150% for 15 seconds			
<b>INDICATOR:</b>				
Front panel:	Alfa-numeric display 4x20 character with back light and measurement: input/output voltage; input frequency; batteries voltage (V); Ambiental and heatsink temperature (C) Charging / Discharging battery % Charge / Discharge current battery (A) Output power (%) Real time-calendar, ups status Button on/off , parameter setting Iout 48V / 63V~ Event alarm Log alarm			

<b>BATTERIES:</b>				
Charger:	Digital adjustable in the range 26Ah - 100Ah			
Nominal voltage battery:	12Vdc 13,3V)	12Vdc (13,3V)	24Vdc (26,6V)	36Vdc (40V)
Self-Test Battery:	YES (10-90days and 1-60min adjustable)			
Start without batteries:	YES (with choice: enable/disable)			
Temperature compensation:	YES			
<b>COMMUNICATION:</b>				
Communication:	OPTIONAL LAN slot with HTTP, SNMP			
Remote monitoring:	OPTIONAL cable modem module designed for Docsis2.0 & Euro DOCSIS2.0			
<b>SAFETY STANDARDS:</b>				
LVD conformity :	EN 60950			
EMC conformity:	EN 62040-2:2006			
<b>DIMENSIONS:</b>				
Height:	22 cm	22 cm	19 cm	19 cm
Widht:	37 cm	37 cm	49 cm	49 cm
Depth:	22 cm	22 cm	29 cm	29 cm
<b>GENERAL:</b>				
Operating temperature range:	From -40°C to +60°C			
IP class:	IP 20			
Voltage distortion:	<5% (3-5%)			
Safety mark:	CE			
Weight:	14,9 kg	16.8 kg	22,8 kg	23,8 kg
<b>WARRANTY:</b>				
Warranty:	3 year			

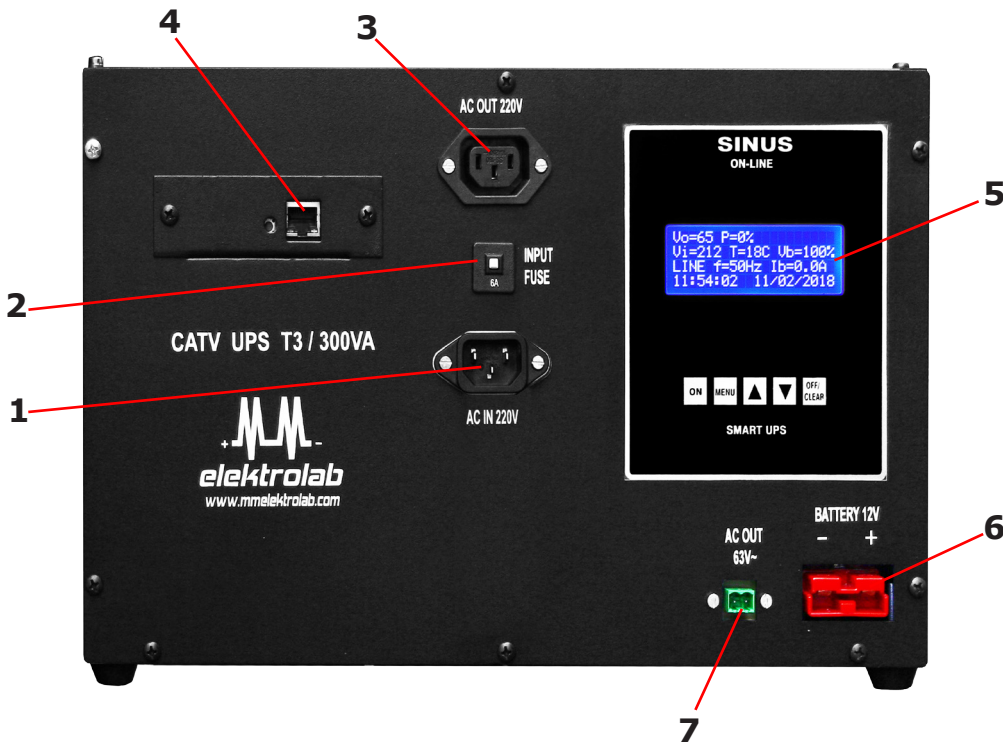
<b>MODEL:</b>	<b>C22</b>	<b>C23</b>	<b>C52</b>
Power:	valid for all outputs		
	2000 VA 1400 W	2000 VA 1400 W	5000 VA 3000 W
<b>INPUT:</b>			
Nominal Voltage:	230v~ (min 150Vac ~ max 290Vac)		
Frequency:	50Hz +/- 10 %		
<b>OUTPUT:</b>			
Nominal Voltage out 1:	70 ili 63 ili 48V +/- 5%		
Current out 1:	Max 22 A	Max 22 A	Max 40 A
Nominal Voltage out 2:	230V +/- 5 %		
Current out 2:	Max 10A		
Wave form:	Pure Sine wave		
Frequency:	50Hz +/- 0,01%		
Transfer time:	2 msec		
Efficiency on main operation:	87%		
<b>PROTECTIONS:</b>			
Protections:	Excessive battery discharge; Overcurrent: short circuit output; Battery overcharged; Reverse battery polarity; Overvoltage output; Under voltage output; Internal thermo protection; Overload main: 150% for 15 seconds		
<b>INDICATOR:</b>			
Front panel:	Alfa-numeric display 4x20 character with back light and measurement: input/output voltage; input frequency; batteries voltage (V); Ambiental and heatsink temperature (C) Charging / Discharging battery % Charge / Discharge current battery (A) Output power (%) Real time-calendar, ups status Button on/off , parameter setting Iout 48V / 63V~ Event alarm Log alarm		

<b>BATERIJA:</b>			
Charger:	Digital adjustable in the range 26Ah - 100Ah 26-200 Ah model C52		
Nominal voltage battery:	48Vdc (53,2V)	36Vdc (40V)	48Vdc (53,2V)
Self-Test Battery:	YES (10-90days and 1-60min adjustable)		
Start without batteries:	YES (with choice: enable/disable)		
Temperature compensation:	YES		
<b>COMMUNICATION:</b>			
Communication:	OPTIONAL LAN slot with HTTP, SNMP		
Remote monitoring:	OPTIONAL cable modem module designed for Docsis2.0 & Euro DOCSIS2.0		
<b>SAFETY STANDARDS:</b>			
LVD conformity :	EN 60950		
EMC conformity:	EN 62040-2:2006		
<b>DIMENSIONS:</b>			
Height:	20 cm	20 cm	24 cm
Widht:	51,5 cm	51,5 cm	53 cm
Depth:	32 cm	32 cm	32 cm + 3 cm
<b>GENERAL:</b>			
Operating temperature range:	From -40°C to +60°C		
IP class:	IP 20		
Voltage distortion:	<5% (3-5%)		
Safety mark:	CE		
Weight:	32,2 kg	32,2 kg	47 kg
<b>WARRANTY:</b>			
Warranty:	3 year		

**CONNECTION SCHEDULE C12, C15, C22, C23:**

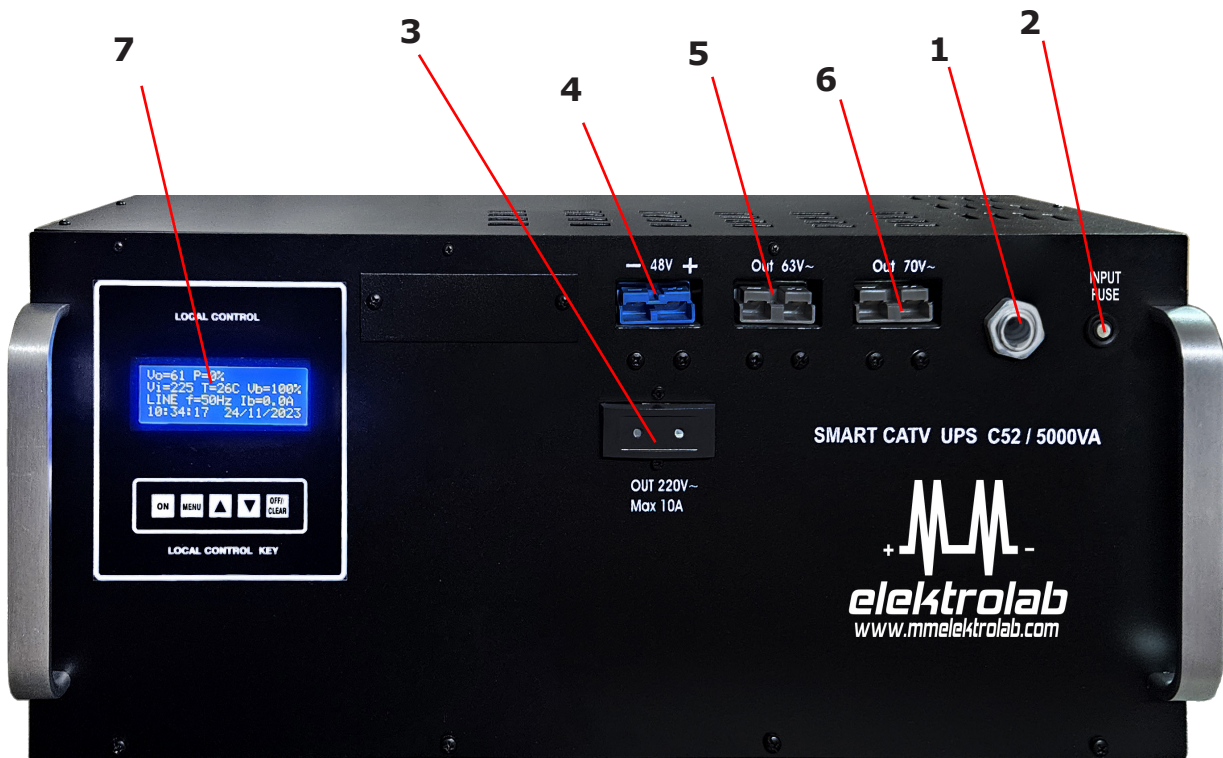


**CONNECTION SCHEDULE C3, C7:**



1. Power connector 220 VAC
2. Power fuse
3. Output connector 220 VAC
4. LAN communication
5. Alfa-numeric display
6. Connector for external batteries
7. Output connector 63V or 48 VAC

**CONNECTION SCHEDULE C52:**



1. Power connector 220 VAC
2. Power fuse
3. Output connector 220 VAC
4. Connector for external batteries 48V
5. Output connector 63 VAC
6. COutput connector 70 VAC
7. Alfa-numeric display



Džona Kenedija 11  
Beograd - Kaluđerica  
Srbija  
+381 11 34 13 442  
office@mmelektrolab.com